

# GypWall SECURE

Attack-resistant security wall system

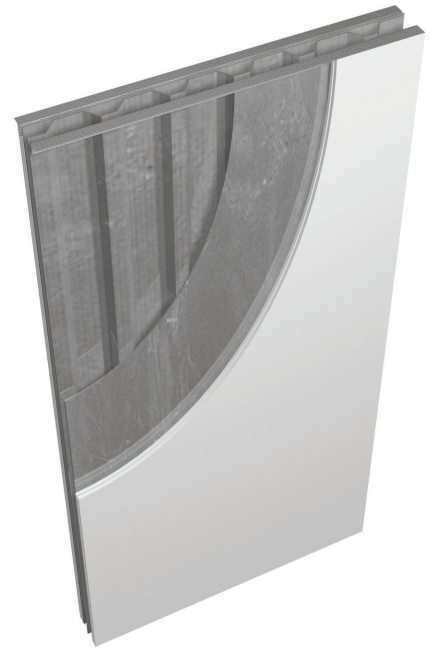
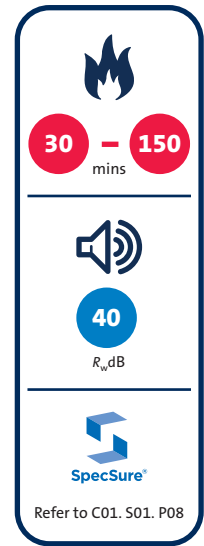


# GypWall SECURE

GypWall SECURE is a lightweight, non-loadbearing security wall, offering high resistance to determined attack using hand tools, making it ideal for cash desks, data centres and pharmacy stores.

## Key benefits

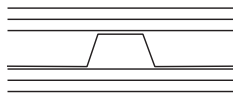
- If an increased level of security is required, additional steel sheets can easily be incorporated into the system
- Enhanced fire performance through non-combustible Glasroc F MULTIBOARD linings
- Floor area is maximised due to the system's narrow footprint of only 70mm
- Reduction of the structural load is achieved through this lightweight alternative solution to traditional masonry construction





**Table 1a — Solutions to satisfy requirements of BS EN 1364-1: 1999**

①



Two layers of board each side of Gypframe Security Sheet. Linings as in table.

Detail	Partition thickness mm	Board type	Lining thickness mm	Maximum partition height <sup>1</sup> mm	Sound insulation $R_w$ dB	Duty rating	Approx. weight kg/m <sup>2</sup>	System reference
<b>30 minutes fire resistance</b> (EN)								
①	70	Glasroc F MULTIBOARD	2 x 10	3700 <sup>2</sup>	40	Severe	50	G100001
<b>120 minutes fire resistance</b> (EN)								
①	70	Glasroc F MULTIBOARD	2 x 10	3000	40	Severe	50	G100001

▶ For further assistance in choosing the right solution for your project, try our System Selector; an online tool that enables quick and easy filtering by performance criteria. It provides system specific information downloads including BIM (Revit) objects. Go to [gyproc.ie](http://gyproc.ie)

<sup>1</sup> The maximum heights quoted are limited by the fire state field of application or by limiting deflection of L/240 at 200 Pa, whichever is the more onerous.

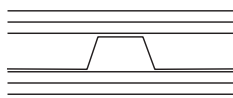
<sup>2</sup> Maximum recommended height is 3000mm based on using single sheets of Gypframe Security Sheet with no horizontal overlap. Heights of 3700mm are achievable. Contact the Gyproc Technical Department for further guidance.

**(NB)** The fire resistance and sound insulation performances are for imperforate partitions, walls and ceilings incorporating boards with all joints taped and filled, or skimmed according to Gyproc's recommendations. The quoted performances are achieved only if Gyproc and Isover components are used throughout, and the Company's fixing recommendations are strictly observed. Any variation in the specification should be checked with Gyproc



**Table 1b — Solutions to satisfy requirements of BS 476: Part 22: 1987**

①



Two layers of board each side of Gypframe Security Sheet. Linings as in table.

Detail	Partition thickness mm	Board type	Lining thickness mm	Maximum partition height <sup>1</sup> mm	Sound insulation $R_w$ dB	Duty rating	Approx. weight kg/m <sup>2</sup>	System reference
<b>150 minutes fire resistance</b> (BS)								
①	70	Glasroc F MULTIBOARD	2 x 10	3700 <sup>2</sup>	40	Severe	50	G100001

▶ For further assistance in choosing the right solution for your project, try our System Selector; an online tool that enables quick and easy filtering by performance criteria. It provides system specific information downloads including BIM (Revit) objects. Go to [gyproc.ie](http://gyproc.ie)

<sup>1</sup> The maximum height quoted is based on a limiting deflection of L/240 at 200 Pa.

<sup>2</sup> Maximum recommended height is 3000mm based on using single sheets of Gypframe Security Sheet with no horizontal overlap. Heights of 3700mm are achievable. Contact the Gyproc Technical Department for further guidance.

**(NB)** The fire resistance and sound insulation performances are for imperforate partitions, walls and ceilings incorporating boards with all joints taped and filled, or skimmed according to Gyproc's recommendations. The quoted performances are achieved only if Gyproc and Isover components are used throughout, and the Company's fixing recommendations are strictly observed. Any variation in the specification should be checked with Gyproc.

# GypWall **SECURE** design

## Security

The excellent mechanical properties of Glasroc F MULTIBOARD, combined with the stiffness and resilience of Gyproframe Security Sheet, make GypWall **SECURE** a formidable barrier to entry. It has a high resistance to 'determined attack' using hand tools, and good resistance to attack using power tools.

Adhoc tests have been carried out at the Building Test Centre. A 'determined attack' by a team of four using hand tools did not achieve through-penetration for approximately 10 minutes. Where even greater resistance to attack is required, 0.7mm flat galvanised steel sheet (by others) should be fixed to the risk side of the security sheet prior to boarding.

## Planning - key factors

Vertical service runs can be accommodated within the profile of the security sheet.

## Head and base fixing

Gyproframe GA4 Steel Angles are fixed to the structure at 300mm centres. Contact the Gyproc Technical Department for further guidance.

## Services

Services and penetrations should be avoided in this system.

## Fixtures

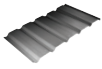
Lightweight fixtures can be made directly into Glasroc F MULTIBOARD. Medium weight fixtures can be made through the lining into the 'high points' of the security sheet core.

## Board finishing

► Refer to C08. S01. P483 – Finishes.

# GypWall SECURE system components

## Gypframe metal components



### Gypframe Security Sheet

Engineered to support the board in the cavity and to provide additional resistance to attack.



### Gypframe GA4 Steel Angle

Used to provide support to the Gypframe Security Sheet.

## Metal products (by others)

### Flat galvanised steel sheet (optional)

0.7mm thickness for additional resistance to attack.

## Board products



### Glasroc F MULTIBOARD

High performance, non combustible glass reinforced plasterboard. Also provides impact resistance.

## Fixing products



### Gyproc Wafer Head Jack-Point Screws

Fixing lapped Gypframe Security Sheet together, and to fix optional flat galvanised steel sheet to Gypframe Security Sheet.

### M8 Through bolt (by others)

M8 diameter bolt, for fixing Gypframe GA4 Steel Angles to structure.



### Gyproc Jack-Point Screws

Fixing boards to Gypframe Security Sheet.

## Plasterboard accessories



### Gyproc Jointing Materials

Jointing compounds, ready mixes and adhesives for reinforcement and finishing of board joints.



### Gyproc Paper Joint Tape

A paper tape designed for reinforcement of flat joints or internal angles.



### Gyproc Drywall Primer

Used to prepare for painting.  
Tub contents 10 litre.

## Finishing products



### Gyproc Skimcoat

To provide a plaster skim finish on most common backgrounds including undercoat plasters and plasterboard.



### Gyproc Carlite Finish

To provide a plaster skim finish on most common backgrounds including undercoat plasters and plasterboard.



### Gyproc Carlite Ultra Finish

Offers all the benefits of Gyproc Skimcoat and Gyproc Carlite Finish with a reduced set time of 90-120mins, making it ideal for smaller jobs.