

Decorative effects

A wide variety of decorative effects can be achieved quickly and simply using Gyproc accessories



Decorative effects

Gyproc decorative accessories are used to enhance walls and ceilings, and to relieve flat runs of lining, joints and angles.

Key benefits

- Cove and Cornice profiles can be used Gyproc Cornice Strips to enhance wall and ceiling angles
- Easy installation
- Cost effective solution where coving is desirable
- An interesting and imaginative aesthetic appearance, creating shadow gaps and recessed skirtings, can be created through the use of Gyproc Styletrims
- Gyproc Cove and Gyproc Cornice can assist in improving airtightness



Decorative effects performance

Sound insulation

Airtightness is essential for optimum sound insulation of plasterboard building elements. Gyproc Cove and Cornice can assist in ensuring that linings meet their stated sound performance levels, since joints will be rendered impermeable during the bonding and jointing / making good process.

Decorative effects design

Backgrounds

Gyproc Cove and Cornice can be installed to clean, dry and sound backgrounds using Gyproc Cove Adhesive. Where the wall or ceiling has severe irregularities, the profiles can be mechanically fixed using non-rusting screws into plugs. Gaps along the wall or ceiling edge of the profile can be filled with Gyproc Cove Adhesive.

Decorative effects components

Fixing products



Gyproc Drywall Screws

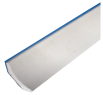
Corrosion resistant self-tapping steel screws for fixing board-to-timber and board-to-metal framing less than 0.8mm thick.



Gyproc Collated Drywall Screws

Corrosion resistant self-tapping steel screws for fixing board-to-timber and board-to-metal framing less than 0.8mm thick.

Decorative products



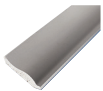
Gyproc Cove

Gypsum plasterboard moulding in traditional 'C' profile.



Gyproc Cove Adhesive

Gypsum based adhesive for fixing Gyproc Cove and Cornice.



Gyproc Cornice

Gypsum plasterboard moulding in classic 'S' profile.

Plasterboard accessories



Gyproc Paper Joint Tape

A paper tape designed for reinforcement of flat joints or internal angles.



Gyproc Corner Tape

A paper tape bonded to two corrosion resistant steel strips.



Gyproc Sealant

Alternative method for pre-fixing Gyproc Styletrims.

Finishing products

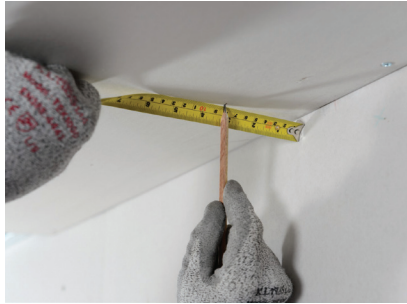


Gyproc Drywall Primer

A general purpose plasterboard primer, providing an ideal surface for decoration with most paints and wall coverings.

Decorative effects installation overview

This is intended to be a basic description of how the system is built.
For detailed installation guidance refer to the [Gyproc Installation Guide](#).



Cove and Cornice

Profiles are cut to length using a fine-tooth saw and mitred using a suitable mitre block. Gyproc Cove Adhesive is evenly applied to both surfaces that will be in contact with the wall and ceiling.

Nails are lightly applied to provide temporary support to the profile until the adhesive has set. Once set, temporary nails are removed and any excess adhesive is used to make good the mitres and any joints. After installation, surfaces are treated with Gyproc Drywall Primer prior to applying the decorative paint finish.



Additional information

For full installation details, refer to the [Gyproc Installation Guide](#), available to download from gyproc.ie