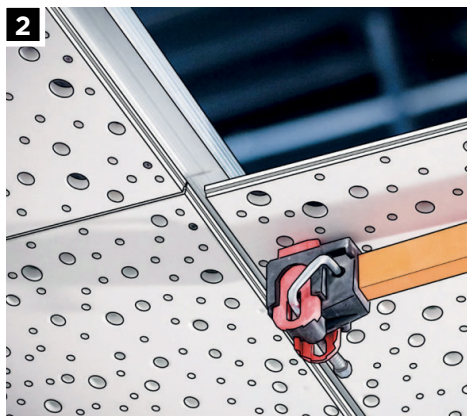
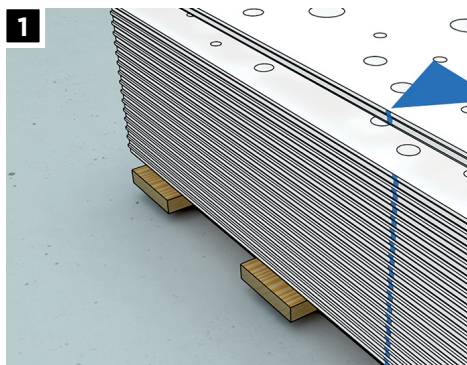


## RIGITONE® EDGE INSTALLATION GUIDE

Rigitone acoustic ceiling plasterboards comprises of a 12.5mm gypsum core, with a range of both geometric, and random pattern perforations. The reverse of the board incorporates an acoustic fleece which provides sound absorption performance.



### Boards Installation

1. Use the blue mark on one of the widths of the board or the marking on the board to decide on the direction of installation: all the blue markings need to be facing the same direction.

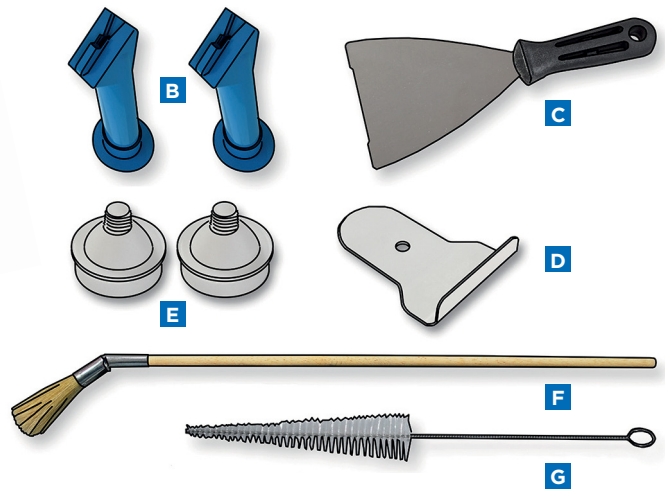
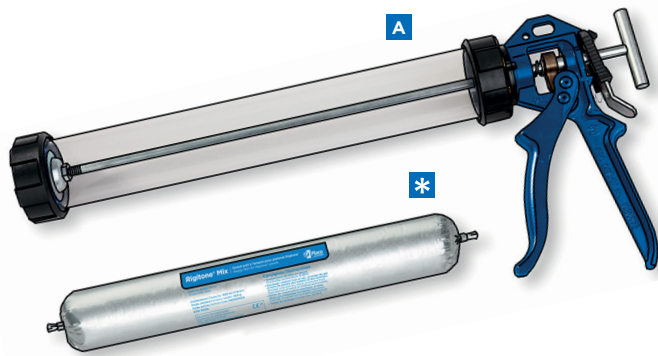
Use the chamfered edge of Rigitone® Edge to correctly fit boards to each other according to the alignment of their designs.

2. Where the Rigitone Edge plasterboard is interfacing with a standard plasterboard border, then a 3-4mm gap should be maintained to enable perforations to be properly aligned and the joints to be perfectly sealed.
3. Boards need to be screwed beginning with the corner abutting either themasonry or the boards already installed in order to avoid them jamming when used (risk of edges curling). Space the TTPC 25 screws no more than 17cm apart.

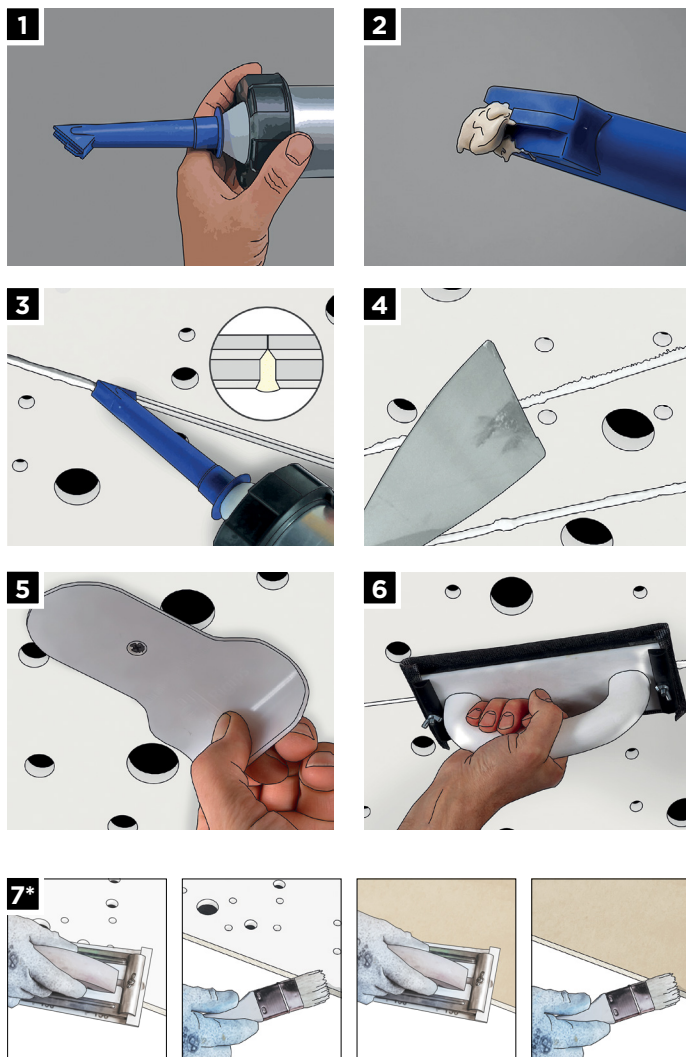
#### INSTALLATION TIPS

- For ease of installation, we advise installing standard plasterboard around the perimeter of the ceiling.
- Expansion joints should be considered every 10m or so.

# Rigitone® Mix Kit



- |                                  |   |
|----------------------------------|---|
| <b>A</b> 1 Rigitone® Mix Pistol  | <b>E</b> 2 Rigitone® caps                               |
| <b>B</b> 2 Rigitone® Mix nozzles | <b>F</b> 1 brush for the primer                         |
| <b>C</b> 1 Rigitone® spatula     | <b>G</b> 1 cleaning brush                               |
| <b>D</b> 1 Rigitone® scraper     | <b>*</b> Rigitone® Mix refill - not included in the kit |



## Kit Rigitone® Mix - Jointing

### PREPARATION OF THE MIX

1. Take a ready-mix refill and insert it into the Rigitone® Mix gun.
2. Close the gun and apply pressure, the mix comes out from the nozzle (packaging = 20 refills - 1 refill of 600 ml = up to 10 m<sup>2</sup> for Rigitone® Edge installed boards).

### APPLICATION OF THE MIX

3. Apply the Rigitone® Mix with the gun.

### SMOOTHING OF THE JOINTS

4. After about 1 hour, level the joints using the Rigitone® scraper.

### FINISHING

5. Use the Rigitone® Mix sealant and the Rigitone® spatula to finish the joints and cover the screw heads.

### SANDING

6. After 12 to 24 hours depending on the humidity of the room, lightly sand the surface with a very fine sandpaper to remove any last residues. The surface is now ready to be painted, using a roller only.

### WHEN CUTTING BOARDS

7. Lightly sand and prime the cut edges of boards using the Rigitone primer.

**Note:** sanding and priming are required for any edge that has been cut.

### \*SOME TIPS

- Preparation of the Lutèce® primer = 2/3 product - 1/3 water.
- Application of the primer => on the board and not the pallet.



### GYPROC IRELAND

Unit 4, Kilcarbery Business Park,  
Nangor Road, Dublin 22, D22 R2Y7  
Telephone: 01 629 8400  
Email: [enquiries@gyproc.ie](mailto:enquiries@gyproc.ie)  
[www.gyproc.ie](http://www.gyproc.ie)