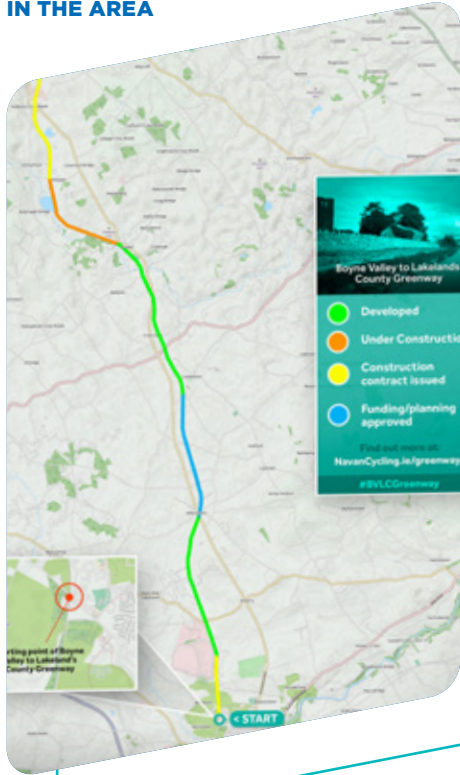


## OTHER DEVELOPMENTS IN THE AREA



- Meath County Council have completed the clearing of shrubbery and have begun lifting railway tracks & sleepers.



# COMMUNITY NEWSLETTER

Our Environmental Performance



### GYPROC MANUFACTURING PLANT

Navan to Kingscourt Road,  
Lisnagrew, Kingscourt, Co. Cavan  
A82 PF99

Tel.: 1800 744 480

**AN EXAMPLE OF WHAT THE  
GREENWAY MAY LOOK LIKE  
ON COMPLETION**



# GYPROC OPERATES GYPSUM MINES IN MAGHERACLOONE AND A MANUFACTURING FACILITY IN LISNAGREW.

THIS NEWSLETTER CONTAINS INFORMATION FOR RESIDENTS IN THESE AREAS.

## WHAT HAPPENS IN THE GYPROC MINE AND MANUFACTURING FACILITY:

- Gypsum is mined from both an underground gypsum mine and above ground quarry located in Magheracloone.
- The gypsum rock is transported by road to a gypsum processing facility at Lisnabo, Kilmainhamwood, Co. Meath just outside the town of Kingscourt, Co.Cavan.
- The gypsum rock is processed to produce a range of plasterboard and bagged plaster. Both the gypsum mine and gypsum processing facilities are operated under EPA licence P0519-04.
- These facilities have been licensed to operate by the EPA since 2002.

A copy of our Annual Environmental Reports (AER) is available on our website  
[www.gyproc.ie](http://www.gyproc.ie)

## DID YOU KNOW?

We can supply plasterboard to  
**40 thousand homes**

Number of bags of plaster supplied to construction projects in Ireland

**3.5 million**  
Each year

Construction Projects are supported by our Sales & Technical Teams

**1,500**  
INCLUDING RESIDENTIAL, HEALTHCARE, EDUCATION & COMMERCIAL PROJECTS

AS PART OF OUR EPA LICENSE WE PERFORM A MONITORING PROGRAM AT BOTH SITES TO ENSURE THAT WE ADHERE TO OUR LICENSE CONDITIONS.



Water on-site is monitored on both sites prior to release to the local environment.



Dust sampling: Dust jars are situated on the mine site perimeter to measure for dust emission compliance.



Noise and vibration monitoring: Carried out to ensure compliance within all set licence limits.



Noise monitoring.

These images show just some of the testing programs that are carried out by our Gyproc Lab Technician.



### KEEP INFORMED

If you would like to keep up to date with Gyproc's activities in the area we have a number of ways in which you can do so:



### WEBSITE

We now have a dedicated section on our website where you can find our Annual Environmental Report, Community Newsletter and any other information relevant to our activities:

Visit [www.gyproc.ie/community-updates](http://www.gyproc.ie/community-updates)



### TEXT MESSAGING SERVICE

Text messaging service dedicated to sharing information and notifying when new information is available on our website:

To join, send your details - Name and Phone Number to 086 387 60 99



### EMAIL

Should you have any enquiries we also have a dedicated community email address:

[community@gyproc.ie](mailto:community@gyproc.ie)



### RESIDENT FORUM

Become a member of our residents forum. Details on how to join can be found on the following page.

## WE WOULD LIKE TO INVITE YOU TO BECOME A MEMBER OF OUR LOCAL RESIDENTS FORUM.

**THE PURPOSE OF THIS FORUM WILL BE TO HELP US DEVELOP AND UNDERSTAND TOPICS YOU WOULD LIKE CONSIDERED AS PART OF OUR COMMUNITY ENGAGEMENT AGENDA.**

In order to join please email or post the below information before the 31<sup>st</sup> May 2023.

Name	
Address	
Email	
Mobile Phone Number	

In order for us to effectively communicate with you in relation to the local residents forum we will require either a postal and/or email address and mobile phone number.

**We look forward to hearing from you.**

**Gyproc**

Email: [community@gyproc.ie](mailto:community@gyproc.ie)

Address: Gyproc Manufacturing Plant Navan to Kingscourt Road, Lisnagrew, Kingscourt, Co. Cavan - A82 PF99

\*Please note that your information will be stored on our communications database for the purposes of communicating with you in relation to the Local Residents Forum Only.

# DID YOU KNOW THAT GYPROC EMPLOYEES HAVE A COMMUNITY OUTREACH PROGRAMME IN PLACE WHICH HAS SUPPORTED MANY LOCAL PROJECTS AND INITIATIVES?

The programme has been running for 10 years and during this time, has provided much needed support to organisations within the community. Whether it be the continued sponsorship of our local sports teams, the upgrading of facilities like the Kingscourt Band Hall, Carrickmacross Down Syndrome centre, or the support of our local schools with the provision of e-tablets, upgraded classroom facilities or just financial support for student projects, the programme strives to connect the company, employees and the local community.

Many of our employees come from the local area as have their fathers before them and there is a long tradition of local employment in Gyproc. This year our employees nominated the sponsoring of several projects that provide essential services in the areas of education, sustainability and mental health.

These programmes coupled with our recent launch of local apprenticeships and third level scholarships for the children in our community are our way of giving back to a community that we have grown with, since the commencement of operations in 1936.

## KINGSCOURT MEN'S SHED

The Men's shed in Kingscourt is a safe space for older men and retirees many from Gyproc do come together to engage in a positive social environment. This project promotes positive mental health and social inclusion for the older generation.



## EAST KNOCKBRIDE PRIMARY SCHOOL

East Knockbride is a primary school that encourages their students to learn in a fun and exciting way with lots of hands on projects such as wormery composter kits, bee and bug hotels, flower beds, polycarbonate greenhouse, compact wireless weather station and picnic benches. As this project is deemed extracurricular, it does not receive funding from the department of education, as such Gyproc was delighted to support the school and the students in their sustainability efforts.



The projects we supported this year with our local schools and community groups have focused on biodiversity and activities that help improve mental health.