

Metal Stud Partition system type – **GypLyner IWL**

Product Substantiation Report (PSR) reference – **B216027 (92mm ‘I’ Studs)**

Performance characteristics

Partition Fire Resistance (BS 476) one direction only:

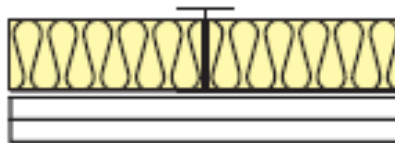
From internal room side: Integrity: **90 minutes**
 Insulation: **60 minutes**

Fire resistances apply to external walls, whose construction incorporates structural steel section with a profiled steel cladding system (or equivalent). Fire Integrity and fire insulation performances may be different. The level of fire insulation performance required is typically determined by the buildings boundary conditions. The level of fire performance required should be specified by others.

Partition Duty Rating (BS 5234): **Severe**

Maximum Recommended Partition height: **5700mm**
 (Based on limiting deflection of L/240@200Pa)

Partition nominal thickness (excluding finishes): **119mm**



Framing components

Gypframe metal ‘I’ stud reference: **Gypframe 92I90 ‘I’ Studs**
(Gypframe 92S50 ‘C’ Studs at junctions and abutments)

Stud centres: **600mm**

Gypframe channel reference: **Gypframe 94C50 Floor & Ceiling Channel** for partitions up to 4199mm, **Gypframe 94DC60 Deep Floor & Ceiling Channel** on partitions 4200mm – 5700mm

Acoustical sealant: **Gyproc Sealant** applied around perimeter to boarded side of partition framework

Deflection Head requirement: As per structural requirements (defined by others)

Drawing references: Refer to relevant Architects drawings

Plasterboard components

Number of plasterboard layers room side: **2**
 Gyproc plasterboards: Layer 1 (Inner): **12.5mm Gyproc FireLine**
 Layer 2: **12.5mm Gyproc FireLine**
 Layer 3: n/a

Screw fixings for boarding: Layer 1 (Inner): **25mm Gyproc Jack-Point Screws**

Layer 2
Layer 3

35mm Gyproc Jack-Point Screws
n/a

- All room side board joints installed staggered in accordance with Gyproc's current installation recommendations.
- Vertical Joints in room side face layer boards treated in accordance with **Gyproc Paper Joint Tape** method.
- Horizontal joints in room side face layer boards to be backed by **Gypframe GFS1** Fixing Strap and treated in accordance with **Gyproc Paper Joint Tape** method.
- Gyproc Jack-Point screws installed to room side boards at 300mm centres (200mm at external corners)
- Gyproc Jack-Point screws must maintain a minimum 10mm penetration through metal framing components.

Insulation components

Insulation specification required in stud cavity: **50mm Isover Steel Frame Batts (SF2)**

Isover Steel Frame Batts friction fitted between studs. Insulation is required to maintain fire performance characteristics of GypLyner IWL system.

Finishing

2mm **Gyproc Skimcoat** plaster (or **Carlite Finish**) applied in accordance with Gyproc's current recommendations.

Or

1 coat of **Gyproc Drywall Primer** prior to direct decoration (applied as soon as possible after board fixing is completed).

Qualifications

All materials unless otherwise indicated shall be supplied by Gyproc, and shall be installed in accordance with their current published instructions and generally in accordance with all relevant Standards. Systems installed in full accordance with Gyproc's recommendations comprising of genuine Gyproc and Isover branded components qualify for the SpecSure lifetime system warranty.



Health & Safety

Ensure that suitable personal protection is worn when handling Gyproc and Isover products/systems. All relevant Health and Safety Legislation and Guidelines must be followed. The relevant Material Safety Data Sheets must be referred to prior to specifying, handling or installing Gyproc & Isover products and systems.

Installation

For full installation assistance refer to Gyproc Systems Solutions and Installation Guide literature which is available at www.gyproc.ie. Alternatively contact the Technical Service department at 1800 744480 (RoI) or 0845 3990159 (NI). Full specification, detailing and site support can be offered for your project specific requirements.

Manufacturer

Gyproc, Unit 4 Kilcarbery Business Park, Nangor Road, Dublin 22, Ireland