

System type – **Timber Joist**

Product Substantiation Report (PSR) reference – **C106049**

Performance characteristics

Ceiling Fire Resistance (BS 476): **30 minutes**

Airborne Laboratory Sound Resistance (BS EN 717): n/a

Impact Laboratory Sound Transfer (BS EN 717): n/a

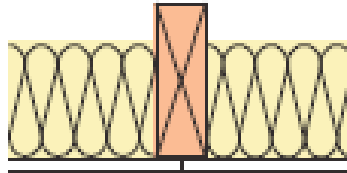
Ceiling depth below structure (excluding finishes): **25.0mm**

Performance criteria stated above relates to directly fixing Gyproc plasterboards to the underside of a **timber joist structure without wood flooring** of following minimum characteristics. Fire resistance of specification (including specified insulation) relates to fire protection of everything above the timber structure.

Timber joist minimum width: **38mm**

Timber joist maximum centres: **600mm**

Timber noggings required between primary joists: **Yes – minimum 38mm x 38mm sections** required to support all face layer plasterboard edges at perimeter and within the field of the ceiling membrane.



Framing components

Timber structure as outlined above

Acoustical sealant: **Gyproc Sealant applied around perimeter of ceiling**

Drawing references: Refer to relevant Architects drawings

Plasterboard components

Number of plasterboard layers: **2**

Gyproc plasterboards:	Layer 1 (Inner):	12.5mm Gyproc WallBoard
	Layer 2	12.5mm Gyproc WallBoard
	Layer 3	n/a

Screw fixings for boarding:	Layer 1 (Inner):	40mm Gyproc Drywall Screws
	Layer 2	50mm Gyproc Drywall Screws
	Layer 3	n/a

- All board joints installed staggered in accordance with Gyproc’s current installation recommendations.
- Joints in face layer boards treated in accordance with **Gyproc Paper Joint Tape** method.
- Gyproc Drywall screws installed at maximum 230mm centres.

- Gyproc Drywall screws must maintain a minimum 25mm penetration through into timber supports.

Insulation components

Insulation specification required above ceiling: **150mm Isover Modular Roll** laid between joists over ceiling

Finishing

2mm **Gyproc Skimcoat** plaster (or **Carlite Finish**) applied in accordance with Gyproc's current recommendations.

Or

1 coat of **Gyproc Drywall Primer** prior to direct decoration (applied as soon as possible after board fixing is completed).

Qualifications

All materials unless otherwise indicated shall be supplied by Gyproc, and shall be installed in accordance with their current published instructions and generally in accordance with all relevant Standards. Systems installed in full accordance with Gyproc's recommendations comprising of genuine Gyproc and Isover branded components qualify for the SpecSure lifetime system warranty.



Health & Safety

Ensure that suitable personal protection is worn when handling Gyproc and Isover products/systems. All relevant Health and Safety Legislation and Guidelines must be followed. The relevant Material Safety Data Sheets must be referred to prior to specifying, handling or installing Gyproc & Isover products and systems.

Installation

For full installation assistance refer to Gyproc Systems Solutions and Installation Guide literature which is available at www.gyproc.ie. Alternatively contact the Technical Service department at 1800 744480 (RoI) or 0845 3990159 (NI). Full specification, detailing and site support can be offered for your project specific requirements.

Manufacturer

Gyproc, Unit 4 Kilcarbery Business Park, Nangor Road, Dublin 22, Ireland