



Glasroc[®] X

Sheathing Board

Xtra protection,
built in.

**MAKING
THE
DIFFERENCE**

We offer a portfolio of wraparound systems for non-loadbearing light gauge steel infill solutions to support you in this fast-moving and often complex industry.

Our solutions are tested to meet 60, 90 and 120-minute fire resistance in both directions on Gyproc Facade stud framework systems, and we'll work with you to meet your thermal performance requirements. Our systems have been developed and tested with the same rigour and attention to detail that we apply to all our products and systems.



Introducing Glasroc X Sheathing Board

Glasroc X is a high performance sheathing board which provides up to 6 months weather protection as certified by the BBA*. It is a reliable lightweight alternative to cement particle boards and is quick to install, without the need for specialist cutting or dust extraction equipment, and with less mess on site.

This is the only gypsum based sheathing board with full BBA certification verifying its weather protection performance in its own right, rather than as part of a system. This means that you can be confident that the board will withstand all typical Irish weather conditions prior to the completion of the external facade.

The board has a gypsum core containing special additives for moisture and mould resistance, is reinforced with a glass mat

on both surfaces and is finished with a UV resistant coating. The non-paper faced board is free from cellulose content and therefore has a strong resistance to mould growth and water penetration, whilst also providing Euroclass A1 non-combustible reaction to fire performance.

The board is BES6001 certified 'Good' which means that it can contribute to points and credits under environmental schemes such as BREEAM.

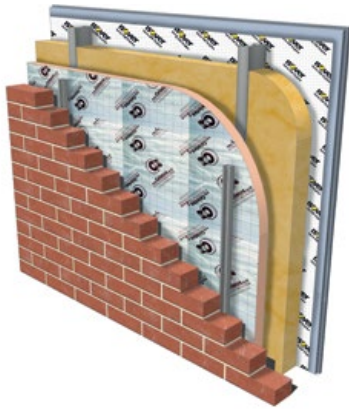
***British Board of Agrément
Glasroc X Sheathing Board can be left
exposed for up to 12 months in accordance
with ASTM G155 standard.**



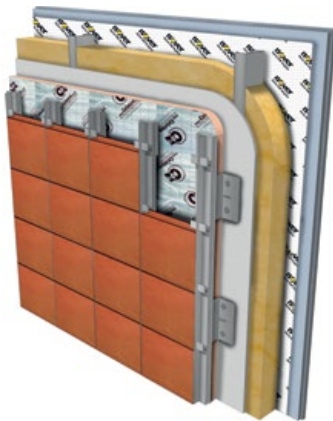
Key features

- ✓ Easy to score and snap resulting in valuable programme time savings compared to cement particle boards
- ✓ Lightweight, 10.9kg/m² for easier site movement and installation. Compared to cement particle boards this equates to a weight reduction of approximately 35%, resulting in a product that is easier to handle and install, especially when working at height
- ✓ Dimensionally stable to aid in maintaining weather protection and air tightness performance
- ✓ Fire resistance tests for up to 120 minutes fire resistance are available

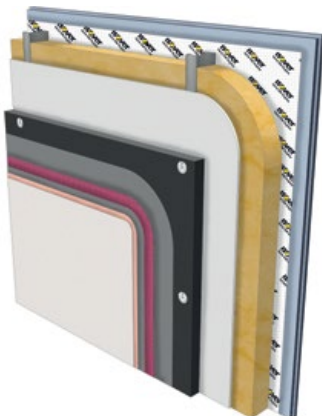
Glasroc X Sheathing Board is designed to provide temporary weather protection for a number of external structural frame steel constructions where the façade/cladding system is fixed through the sheathing board into the structural frame steel stud:



Structural frame steel with brick-tie system



Structural frame steel with rainscreen cladding



Structural frame steel with externally insulated façade system (EIFS)



At Gyproc we're passionate about helping our customers create better spaces to live, work and play. With over 80 years' experience in plaster, plasterboard and ceiling solutions, we already have a multitude of high performance products and systems. However we're pushing the boundaries in our current thinking and we have an innovation programme, which is driven by working closely with our customers.



About Gyproc

A reputation you can rely on

We're well known for our expert technical knowledge and the support that we provide to our customers. When you work with Gyproc you get a commitment to quality and great service. As our customer, we can offer you a great deal more. Whether it's training, technical advice or help recycling your plasterboard offcuts, we're sure we have a service to support your business needs.

Technical support

All of our advisors are fully trained on legislation and system requirements, and can help you with your questions whether small or complex. Customers can obtain advice on a range of topics, including acoustic, fire, structural and thermal requirements.

Our team of technical specialists provide guidance on Gyproc products and systems, providing solutions to your needs.

If you have any technical enquiries get in touch with us:

ROI: Free Phone: 1800 744480

NI: Free Phone: 0845 3990159

Email: tech.ie@saint-gobain.com

Plasterboard recycling service

We are the only manufacturer in Ireland to now offer a plasterboard off-cut recycling service. Responsible waste management is a priority for us and we've always believed that effective waste management makes good environmental and business sense. Gyproc has now developed a cost-effective process to take back and recycle plasterboard off-cuts. We will provide a Gyproc waste movement document to prove that your plasterboard offcuts were 100% recycled back into the process - keeping you compliant with Irish law.

Plasterboard recycling service contacts:

Tel: 01 6298444

Email: PRS.customerservice@saint-gobain.com

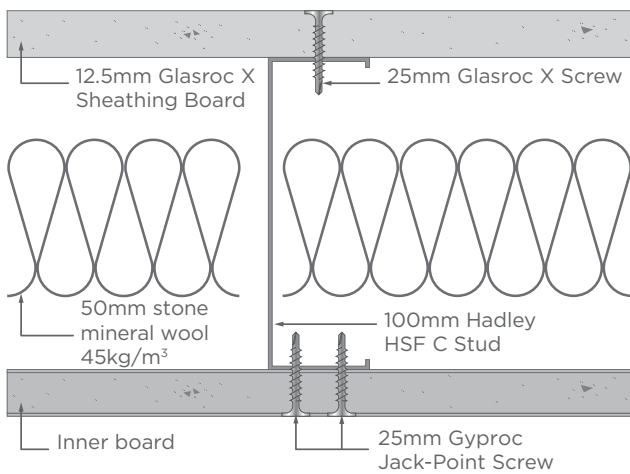
Performance tables

All fire, acoustic and weathering performance testing was undertaken with the complete Glasroc X solution installed; Glasroc X Sheathing Board, Glasroc X Sealant and Glasroc X Screws.

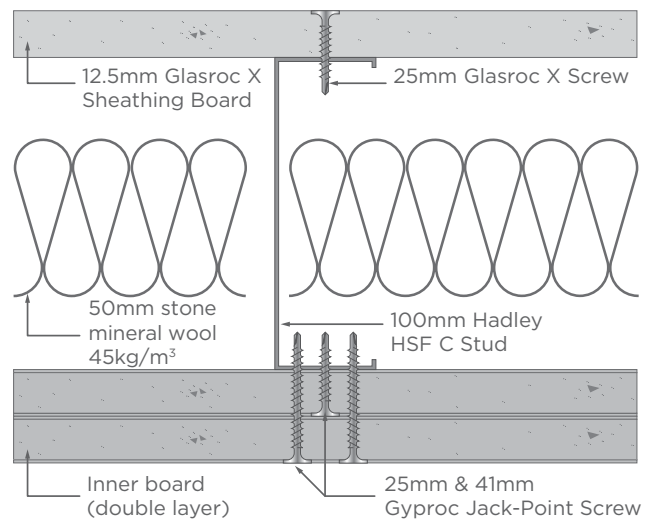
All three items must be installed together to achieve these performances.

Fire resistance performance requirements will vary depending upon factors including building height, use and location. For further information, refer to Technical Guidance Document B (ROI) and Technical Booklet E (NI).

➤ Non-loadbearing fire test[†] (BS 476: Part 22: 1987)



➤ Loadbearing fire test[†] (BS 476: Part 21: 1987)



INNER BOARD TYPE	FIRE RESISTANCE (IN TO OUT)	FIRE RESISTANCE (OUT TO IN)
15mm Gyproc FireLine	60mins BTC19613F*	60mins BTC19614F*
2x15mm Gyproc FireLine	120mins BTC19712F*	120mins BTC19616F*

INNER BOARD TYPE	FIRE RESISTANCE (IN TO OUT)	FIRE RESISTANCE (OUT TO IN)
2x15mm Gyproc FireLine	60mins BTC19751F*	30mins BTC19735F*
2x15mm Gyproc WallBoard	60mins BTC19789F*	N/A

[†] System performances shown in the above tables are for indicative purposes only and were conducted on 100mm 1.2mm C studs with Glasroc X Sheathing Board as the external lining.

* Test Report Number



➤ Acoustic test[†]

INNER BOARD TYPE	INSULATION	ACOUSTIC PERFORMANCE
2x15mm Gyproc WallBoard	50mm stone mineral wool 45kg/m ³	49RwdB

➤ Characteristic wind load resistance

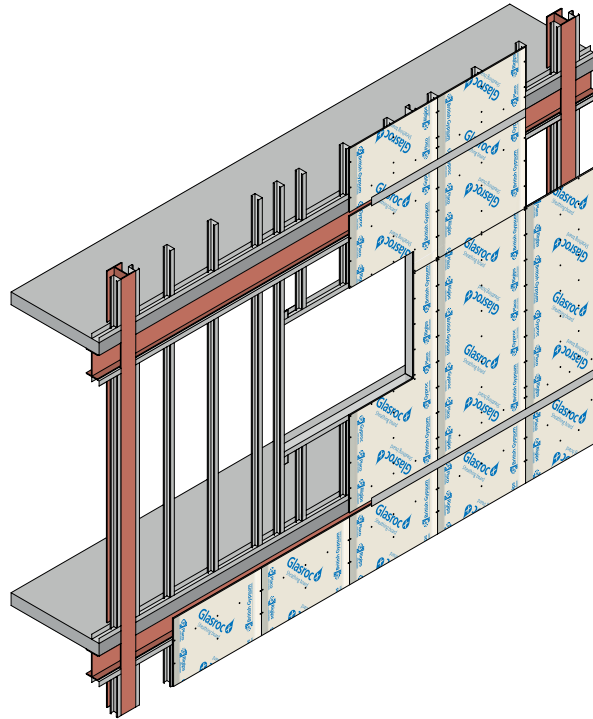
DESIGN WIND LOAD RESISTANCE (KPA)	DISTANCE BETWEEN VERTICAL SUPPORT RAILS (MM)
1.33	600

➤ Glasroc X Sheathing Board performance table

	DESCRIPTION	PERFORMANCE
General	Density	872kg/m ³
Mechanical properties	Flexural strength longitudinal direction according to BS EN 15283-1:2008	>540N
	Flexural strength transverse direction according to BS EN 15283-1:2008	>210N
Fire	Reaction to Fire - Euro class according to BS EN 13501-1:2007	A1
Thermal	Thermal conductivity according to BS EN 12667:2001	0.186 W/mK
	Thermal resistance (12.5mm board)	0.067m ² K/W
Permeability	Water vapour resistance (12.5mm board) according to BS EN ISO 12572:2001	4.57 x 10 ⁸ m ² sPa/kg 0.46 MNs/g
	Water vapour resistance factor μ according to BS EN ISO 12572:2001	7.0
Moisture resistance	Water uptake (2hrs immersion) according to BS EN 15283-1:2008	H1
Mould resistance	Resistance to mould growth - ASTM D3273 test	10/10

Technical details

- External Wall structural frame steel - Glasroc X Sheathing Board elevation



- External Wall structural frame steel - Glasroc X Sheathing Board jointed with Glasroc X Sealant



Installation guidance

STEP 1

Completed structural frame steel framework ready to receive the Glasroc X Sheathing Board.



STEP 2

Measure the required length of board to be installed. If cutting is necessary, score Glasroc X Sheathing Board with a suitable knife and snap the board cleanly to length or width.





STEP 3

Run a continuous 6mm bead of Glasroc X Sealant along the vertical edge of the surface that the first sheet of Glasroc X Sheathing Board will abut.

STEP 4

Manoeuvre the board into position against the framework.

STEP 5

Fix Glasroc X Sheathing Board around its perimeter and to intermediate studs using Glasroc X Screws at 300mm centres. The first fixing of the board into the stud should be 100mm above / below the channel / track leg.

NB Glasroc X Screws are suitable for metal studs up to 3.2mm gauge. Glasroc X Screws should be installed flush to the surface of the board. If below the surface of the board, Glasroc X Sealant should be applied to cover the head.



Installation guidance

(Continued)



STEP 6

Run a continuous 6mm bead of Glasroc X Sealant along the vertical corner between stud and the installed Glasroc X Sheathing Board exposed edges, which will have other boards abutting against it.

NB Glasroc X Sealant is supplied in foil cartridges.

If installing above another row of installed board, Glasroc X Sealant should also be applied to seal the horizontal joint.

STEP 7

Abut subsequent sheets of Glasroc X Sheathing Board up to the previous one ensuring the sealant “mushrooms” out onto the face of the board, fully sealing the joint.



STEP 8

Fix subsequent sheets of Glasroc X Sheathing Board around its perimeter and to intermediate studs using Glasroc X Screws at 300mm centres. The first fixing of the board into the stud should be 100mm above / below the channel / track leg.

NB Glasroc X Screws should be installed flush to the surface of the board. If below the surface of the board, Glasroc X Sealant should be applied to cover the head.

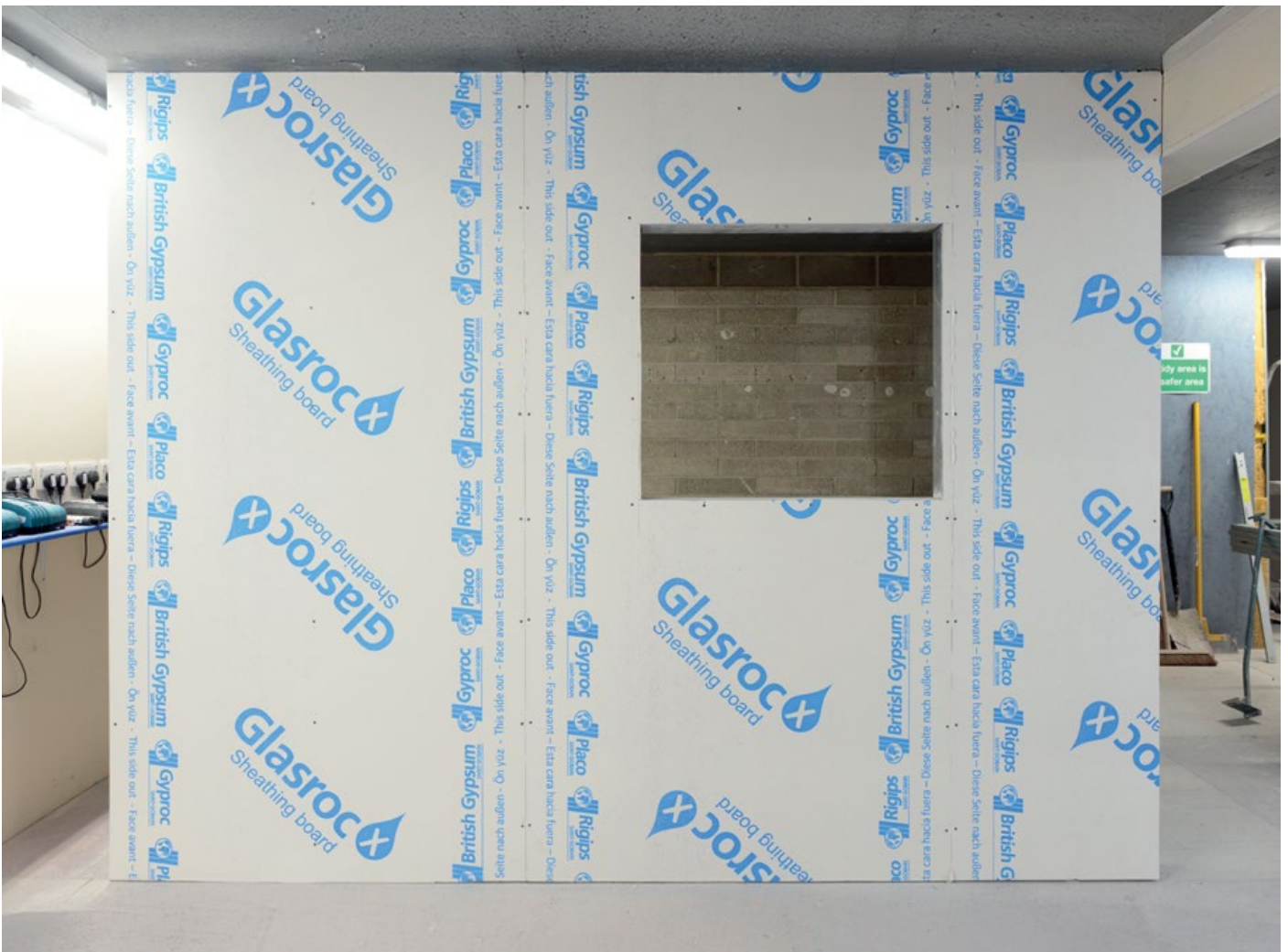


STEP 9

Where openings are required, first fix around the perimeter of the opening using Glasroc X screws at 300mm centres. The opening can then be cut. Alternatively, if a spandrel panel or door/window header is to be used, repeat steps 4-6 with a piece of Glasroc X Sheathing Board cut to the appropriate size.

STEP 9

Finished Glasroc X Sheathing Board in place.



System components

✓ Glasroc® X Sheathing Board



Sizes 12.5 x 1200 x 2400mm

Pack size 50 boards per pallet

✓ Glasroc® X Screws



Sizes 25mm

Pack size 1000 pieces per box
10 boxes per carton
48 cartons per pallet

Corrosion performance* 1000hrs
salt spray accelerated

✓ Glasroc® X Sealant



Sizes 600ml foil sausages

Pack size 12 pieces per box
75 boxes per pallet

*Corrosion performance in accordance with BS EN ISO 9227:2017





Gyproc
SAINT-GOBAIN

Placo
SAINT-GOBAIN

e Seite nach außen - Ön yüz - The



GYPROC IRELAND

Unit 4, Kilcarbery Business Park,
Nangor Road, Dublin 22
D22 R2Y7
Telephone: 01 629 8400
Email: enquiries@gyproc.ie
www.gyproc.ie



@Gyproc_Ireland



@Gyproc_Ireland



@Gyproc-Ireland

Gyproc, Gypframe and Glasroc are all registered trade names of Saint-Gobain Construction Products (Irl) Limited. Isover is a registered trade name of Saint-Gobain. Saint-Gobain Construction Products (Irl) Limited reserves the right to revise product specifications without notice. The information in this document was correct to the best of our knowledge at the time of publication. It is the user's responsibility to ensure that it remains current prior to use. The information in this document is for guidance only and should not be read in isolation. Users should read and familiarise themselves with all the information contained in this document and ensure that they are fully conversant with the products and systems being used, before subsequent specification or installation. For a comprehensive and up-to-date library of information visit the Gyproc website at: www.gyproc.ie