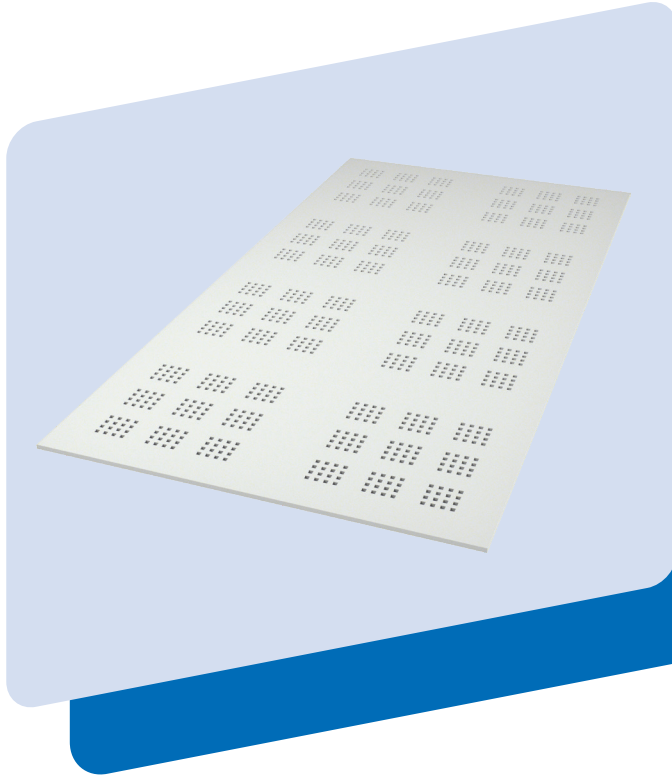


PRODUCT DATA SHEET

# GYPTONE BIG™ QUATTRO 47

Acoustic Board with  
Square Perforations



## Product Description

The Gyptone acoustic ceiling range is designed to contribute to a room's acoustic environment with optimised reverberation time and improved speech intelligibility in a given room, like in schools, kindergartens, offices, retail and the health sector. All Gyptone products is with the Activ'Air technology that will improve the indoor air quality by reducing the formaldehyde level.

The Gyptone BIG range includes many different perforation designs: BIG Line 6, Quattro 41, Quattro 46, Quattro 47, Quattro 41 CURVE and Line 6 CURVE, all with 4 tapered edges (edge B1).

Gyptone acoustic ceilings are made from natural materials and contains no harmful substances.

The environmental impacts of Gyptone boards have been assessed over its whole life cycle. Its Environmental Product Declaration, EPD in accordance with *EN 15804* and *ISO 14025* and has been verified by an independent third party.

## Characteristics

**Activ'Air:** Gyptone Activ'Air technology is designed to decompose formaldehyde emissions from emitting building materials, paint, furniture, carpets etc., into non harmful inert compounds. Gyptone Activ'Air ceilings can reduce formaldehyde concentrations by up to 70%. Gyptone boards are compliant with LEED, BREEAM and the EU taxonomy for low VOC emissions by virtue of certification under M1 and Danish Indoor Climate Labelling.\*

**Sustainability:** Gyptone acoustic ceilings are made of gypsum and carton recycled content. The carton is produced from recycled cardboard and paper. The used gypsum consists of natural gypsum in combination with recycled gypsum collected from construction sites and recycling centres.

**Dimensional stability:** Gyptone BIG should be installed and used in areas with a relative humidity not exceeding 70% for prolonged periods or temperature exceeding 45°C.

**Installation:** Gyptone BIG is suitable for direct or suspended screw fixing and the system is not demountable. See Gyptone BIG installation manual for further details.

**Construction height:** The smallest possible standard construction height with MF grid on one level is 145mm including the board. For smaller construction heights contact our technical department.

**Surface:** Gyptone BIG is supplied unpainted. The surface finish is done in site after jointing is completed. Ceilings must be painted with a short-haired roller. The boards must not be spray-painted as this considerably impairs sound absorption.

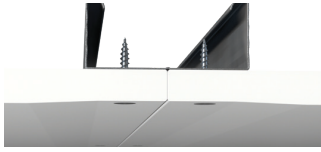
**Maintenance:** Repainting must be done with a shorthaired roller. The tiles must not be spray-painted, as this impairs sound absorption.

**Cleaning:** Depends on the surface treatment.

\*The effectiveness of the Activ'Air technology has been tested by the accredited Eurofins laboratory. The tests show that a Gyptone ceiling with Activ'Air reduces up to 70% of the formaldehyde in a controlled test environment.

## Edge B1

Concealed metal grid



## Edge B1

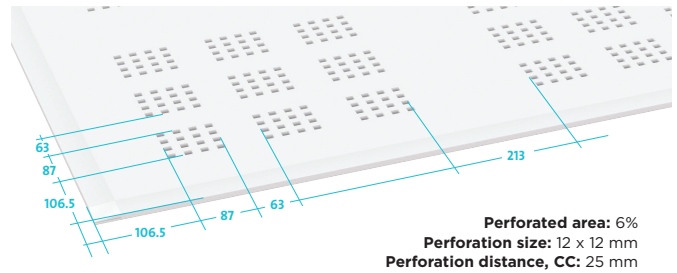
Concealed wooden beam



## Acoustic properties

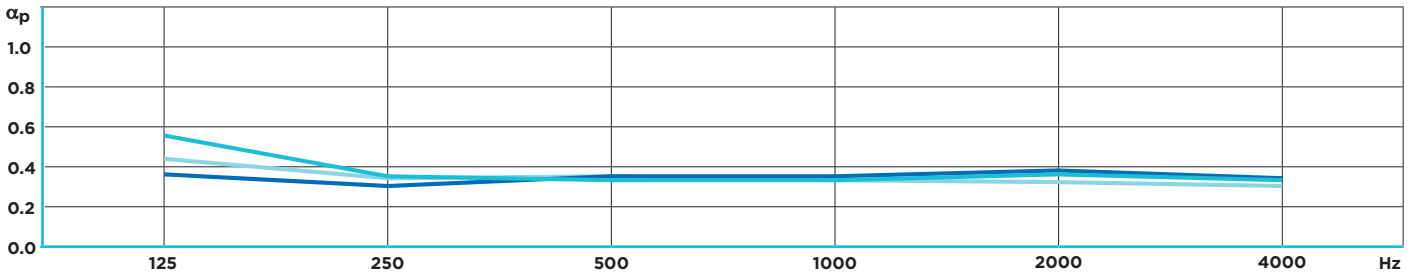
The acoustic measurements are obtained through testing in accordance with *ISO 354*. The construction height specifies the distance between the undersides of the suspended ceiling and the existing floor/ceiling construction. The sound absorption is affected by construction height and by any mineral wool installed behind them.

TECHNICAL DATA	VALUE
Tissue colour	White
Edge type	Tapered edge on all four sides, edge B1
Modular size	1200x2400mm
Thickness	12.5mm
Weight	Approx. 8 kg/m <sup>2</sup>
Colour	Unpainted
Reaction to Fire Classification	A2-s1, d0 (in accordance with EN 13501-1)



## Acoustics

Practical absorption coefficient  $\alpha_p$



SUSPENSION DISTANCE	MINERAL WOOL	FREQUENCY						$\alpha_w$ VALUE	NRC VALUE	ABSORPTION CLASS
		125 Hz	250 Hz	500 Hz	1 kHz	2 kHz	4 kHz			
58mm	50mm	0.56	0.35	0.33	0.33	0.36	0.33	0.35	0.35	D
200mm	-	0.44	0.34	0.35	0.33	0.32	0.30	0.35	0.35	D
400mm	50mm	0.36	0.30	0.35	0.35	0.38	0.34	0.40	0.35	D

Freephone ROI: 1800 744480

Freephone NI: 0845 3990159

Email: tech.ie@saint-gobain.com

[www.gyproc.ie](http://www.gyproc.ie)

Gyproc, Gyproframe and Glasroc are all registered trade names of Saint-Gobain Construction Products (Irl) Limited. Isover is a registered trade name of Saint-Gobain.

Saint-Gobain Construction Products (Irl) Limited reserves the right to revise product specifications without notice. The information in this document was correct to the best of our knowledge at the time of publication. It is the user's responsibility to ensure that it remains current prior to use. The information in this document is for guidance only and should not be read in isolation. Users should read and familiarise themselves with all the information contained in this document and ensure that they are fully conversant with the products and systems being used, before subsequent specification or installation. For a comprehensive and up-to-date library of information visit the Gyproc website at: [www.gyproc.ie](http://www.gyproc.ie)



© Saint-Gobain Construction Products (Irl) Limited  
April 2025 | PDS\_CTB\_QUATTRO-47

