

System type – **Timber Joist**

Product Substantiation Report (PSR) reference – **G106023**

Performance characteristics

Ceiling Fire Resistance (BS 476): **60mins**

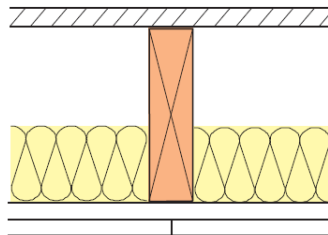
Airborne Laboratory Sound Resistance (BS EN 717):

Impact Laboratory Sound Transfer (BS EN 717):

Ceiling depth below structure (excluding finishes): **20mm**

Performance criteria stated above relates to GypLyner suspended ceiling installed below a **timber joist structure with wood flooring** of following minimum characteristics.

Timber joist minimum width: **47mm**
 Timber joist maximum centres: **600mm**
 Minimum thickness & grade of flooring: **21mm plain edge wood board flooring**



Framing components

Ceiling Section installed maximum centres: **450mm**

Acoustical sealant: **Gyproc Sealant applied around perimeter of ceiling**

Drawing references: Refer to relevant Architects drawings

Plasterboard components

Number of plasterboard layers: 2

Gyproc plasterboards: Layer 1 (Inner): **10mm Gyproc MultiBoard**
 Layer 2: **10mm Gyproc MultiBoard**

Screw fixings for boarding: Layer 1 (Inner): **35mm Gyproc Drywall Screws**
 Layer 2: **45mm Gyproc Drywall Screws**

All board joints installed staggered in accordance with Gyproc’s current installation recommendations.

- Joints in face layer boards treated in accordance with **Gyproc Paper Joint Tape** method.
- Gyproc Drywall screws installed at a maximum 230mm centres within the field of the board and 150mm centres along board ends.
- Gyproc Drywall screws must maintain a minimum 25mm penetration through timber framing components.
- **Gyproc Wafer Head Jack-Point Screws** used to fix Gypframe metal components together.

Insulation Component
100mm **Isover Modular Roll**

Finishing

2mm **Gyproc Skimcoat** plaster (or **Carlite Finish**) applied in accordance with Gyproc's current recommendations.

Or

1 coat of **Gyproc Drywall Primer** prior to direct decoration (applied as soon as possible after board fixing is completed).

Qualifications

All materials unless otherwise indicated shall be supplied by Gyproc, and shall be installed in accordance with their current published instructions and generally in accordance with all relevant Standards. Systems installed in full accordance with Gyproc's recommendations comprising of genuine Gyproc and Isover branded components qualify for the SpecSure lifetime system warranty.



Health & Safety

Ensure that suitable personal protection is worn when handling Gyproc and Isover products/systems. All relevant Health and Safety Legislation and Guidelines must be followed. The relevant Material Safety Data Sheets must be referred to prior to specifying, handling or installing Gyproc & Isover products and systems.

Installation

For full installation assistance refer to Gyproc Systems Solutions and Installation Guide literature which is available at www.gyproc.ie. Alternatively contact the Technical Service department at 1800 744480 (RoI) or 0845 3990159 (NI). Full specification, detailing and site support can be offered for your project specific requirements.

Manufacturer

Gyproc, Unit 4 Kilcarbery Business Park, Nangor Road, Dublin 22, Ireland