

System type – **GypLyner ceiling**

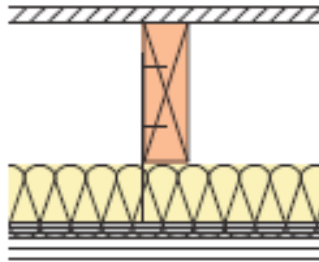
Product Substantiation Report (PSR) reference – **G106033**

Performance characteristics

Ceiling Fire Resistance (BS 476):	90 minutes
Airborne Laboratory Sound Resistance (BS EN 717):	n/a
Impact Laboratory Sound Transfer (BS EN 717):	n/a
Ceiling depth below structure (excluding finishes):	130mm to 150mm

Performance criteria stated above relates to GypLyner suspended ceiling installed below a **timber joist structure with wood flooring** of following minimum characteristics.

Timber joist minimum width:	50mm
Timber joist maximum centres:	600mm
Minimum thickness & grade of flooring:	Minimum 22mm tongued & grooved wood board flooring



Framing components

Gypframe Ceiling channels:	Gypframe GL1 Lining Channel
Ceiling Section installed maximum centres:	600mm
Gypframe hanging brackets:	Gypframe GL6 Timber Connectors
Hanging bracket installed maximum centres:	1200mm
Gypframe perimeter channel:	Gypframe GL8 Track
Gypframe channel connectors:	Gypframe GL3 Channel Construction
Acoustical sealant:	Gyproc Sealant applied around perimeter of ceiling
Drawing references:	Refer to relevant Architects drawings

Plasterboard components

Number of plasterboard layers:	2
Gyproc plasterboards:	Layer 1 (Inner): 12.5mm Glasroc MultiBoard
	Layer 2: 12.5mm Glasroc MultiBoard
	Layer 3: n/a
Screw fixings for boarding:	Layer 1 (Inner): 25mm Gyproc Drywall Screws
	Layer 2: 35mm Gyproc Drywall Screws

Layer 3

n/a

- All board joints installed staggered in accordance with Gyproc's current installation recommendations.
- Joints in face layer boards treated in accordance with **Gyproc Paper Joint Tape** method.
- Gyproc DryWall screws installed at 230mm centres within the field of the board and 150mm centres along board ends.
- Gyproc DryWall screws must maintain a minimum 10mm penetration through metal framing components.
- **Gyproc Wafer Head Jack-Point Screws** used to fix Gypframe metal components together.

Insulation components

Insulation specification required above ceiling: n/a

Finishing

2mm **Gyproc Skimcoat** plaster (or **Carlite Finish**) applied in accordance with Gyproc's current recommendations.

Or

1 coat of **Gyproc Drywall Primer** prior to direct decoration (applied as soon as possible after board fixing is completed).

Qualifications

All materials unless otherwise indicated shall be supplied by Gyproc, and shall be installed in accordance with their current published instructions and generally in accordance with all relevant Standards. Systems installed in full accordance with Gyproc's recommendations comprising of genuine Gyproc and Isover branded components qualify for the SpecSure lifetime system warranty.



Health & Safety

Ensure that suitable personal protection is worn when handling Gyproc and Isover products/systems. All relevant Health and Safety Legislation and Guidelines must be followed. The relevant Material Safety Data Sheets must be referred to prior to specifying, handling or installing Gyproc & Isover products and systems.

Installation

For full installation assistance refer to Gyproc Systems Solutions and Installation Guide literature which is available at www.gyproc.ie. Alternatively contact the Technical Service department at 1800 744480. Full specification, detailing and site support can be offered for your project specific requirements.

Manufacturer

Gyproc, Unit 4 Kilcarbery Business Park, Nangor Road, Dublin 22, Ireland