

Metal Stud Partition system type – **CasoLine MF**

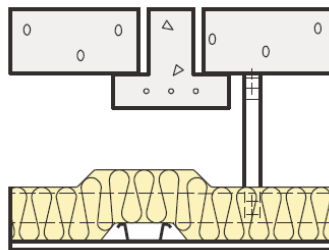
Product Substantiation Report (PSR) reference – **C100018**

Performance characteristics

Ceiling Fire Resistance (BS 476):	n/a
Airborne Laboratory Sound Resistance (BS EN 717):	61RwdB
Impact Laboratory Sound Transfer (BS EN 717):	60LnwdB
Ceiling depth below structure (excluding finishes):	252.5mm

Performance criteria stated above relates to CasoLine MF suspended ceiling installed below a **lightweight concrete joist floor with concrete infill panel** of following minimum characteristics.

Total joist and infill depth:	150mm
Concrete joist maximum centres:	600mm



Framing components

Gypframe Ceiling Sections:	Gypframe MF5 Ceiling Section
Ceiling Section installed maximum centres:	450mm
Gypframe Primary Channels:	Gypframe MF7 Primary Channel
Primary Channel installed maximum centres:	1200mm
Gypframe Connecting Clips:	Gypframe MF9 Connecting Clips used to connect MF5's to MF7's at every intersection.
Gypframe Hanging Angle:	Gypframe GA1 Steel Angle
Hanging Angle installed maximum centres:	1200mm
Acoustical sealant:	Gyproc Sealant applied around perimeter of ceiling
Drawing references:	Refer to relevant Architects drawings

Plasterboard components

Number of plasterboard layers:	1
Gyproc plasterboards:	Layer 1 (Inner): 12.5mm Gyproc WallBoard
Screw fixings for boarding:	Layer 1 (Inner): 25mm Gyproc Drywall Screws

- All board joints installed staggered in accordance with Gyproc's current installation recommendations.
- Joints in face layer boards treated in accordance with **Gyproc Paper Joint Tape** method.
- Gyproc Drywall screws installed at 230mm centres within the field of the board and 150mm centres along board ends.
- Gyproc Drywall screws must maintain a minimum 10mm penetration through metal framing components.
- **Gyproc Wafer Head Jack-Point Screws** used to fix Gypframe GA1 Angle to Gypframe MF7 Primary Channels.

Insulation components

Insulation specification required above ceiling: **80mm Isover Modular Roll** in cavity

Finishing

2mm **Gyproc Skimcoat** plaster (or **Carlite Finish**) applied in accordance with Gyproc's current recommendations.

Or

1 coat of **Gyproc Drywall Primer** prior to direct decoration (applied as soon as possible after board fixing is completed).

Qualifications

All materials unless otherwise indicated shall be supplied by Gyproc, and shall be installed in accordance with their current published instructions and generally in accordance with all relevant Standards. Systems installed in full accordance with Gyproc's recommendations comprising of genuine Gyproc and Isover branded components qualify for the SpecSure lifetime system warranty.



Health & Safety

Ensure that suitable personal protection is worn when handling Gyproc and Isover products/systems. All relevant Health and Safety Legislation and Guidelines must be followed. The relevant Material Safety Data Sheets must be referred to prior to specifying, handling or installing Gyproc & Isover products and systems.

Installation

For full installation assistance refer to Gyproc Systems Solutions and Installation Guide literature which is available at www.gyproc.ie. Alternatively contact the Technical Service department at 1800 744480 (RoI) or 0845 3990159 (NI). Full specification, detailing and site support can be offered for your project specific requirements.

Manufacturer

Gyproc, Unit 4 Kilcarbery Business Park, Nangor Road, Dublin 22, Ireland