

System type – **CasoLine MF**

Product Substantiation Report (PSR) reference – **C106008**

**Performance characteristics**

Ceiling Fire Resistance (BS 476): **30 minutes**

Airborne Laboratory Sound Resistance (BS EN 717): **59 R<sub>w</sub>dB**

Impact Laboratory Sound Transfer (BS EN 717): **62 L<sub>nw</sub>dB**

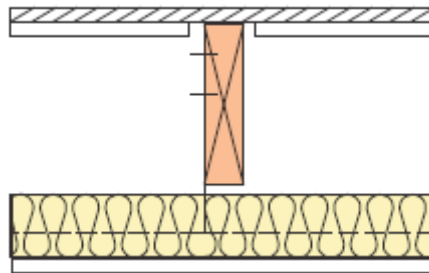
Ceiling depth below structure (excluding finishes): **107mm**

Performance criteria stated above relates to directly fixing Gyproc plasterboards to the underside of a **timber joist structure with wood flooring** of following minimum characteristics.

Timber joist minimum width: **45mm**

Timber joist maximum centres: **600mm**

Minimum thickness & grade of flooring: **Walking surface of 18mm tongue & groove  
Wood chipboard flooring with 19mm Gyproc  
Plank fixed to the underside of chipboard.**



**Framing components**

Timber structure as outlined above

Gypframe Ceiling Sections: **Gypframe MF5 Ceiling Section**

Ceiling Section installed maximum centres: **450mm**

Gypframe Primary Channels: **Gypframe MF7 Primary Channel**

Primary Channel installed maximum centres: **1200mm**

Gypframe Connecting Clips: **Gypframe MF9 Connecting Clips** used to connect MF5's to MF7's at every intersection.

Gypframe Hanging Angle: **Gypframe GA1 Steel Angle**

Hanging Angle installed maximum centres: **1200mm**

Acoustical sealant: **Gyproc Sealant applied around perimeter of ceiling**

Drawing references: Refer to relevant Architects drawings

**Plasterboard components**

Number of plasterboard layers to underside: **2**

Gyproc plasterboards:	Layer 1 (Inner):	<b>12.5mm Gyproc SoundBloc</b>
	Layer 2	n/a
	Layer 3	n/a
Screw fixings for boarding:	Layer 1 (Inner):	<b>25mm Gyproc Drywall Screws</b>
	Layer 2	n/a
	Layer 3	n/a

- All underside board joints installed staggered in accordance with Gyproc's current installation recommendations.
- Joints in underside face layer boards treated in accordance with **Gyproc Paper Joint Tape** method.
- Gyproc Drywall screws installed at maximum 230mm centres.
- Gyproc Drywall screws must maintain a minimum 10mm penetration through Gypframe metal framing.
- **Gyproc Wafer Head Jack-Point Screws** used to fix Gypframe GA1 Angle to Gypframe MF7 Primary Channels

### **Insulation components**

Insulation specification required above ceiling: **80mm Isover Modular Roll** laid on ceiling boards

### **Finishing**

2mm **Gyproc Skimcoat** plaster (or **Carlite Finish**) applied in accordance with Gyproc's current recommendations.

Or

1 coat of **Gyproc Drywall Primer** prior to direct decoration (applied as soon as possible after board fixing is completed).

### **Qualifications**

All materials unless otherwise indicated shall be supplied by Gyproc, and shall be installed in accordance with their current published instructions and generally in accordance with all relevant Standards. Systems installed in full accordance with Gyproc's recommendations comprising of genuine Gyproc and Isover branded components qualify for the SpecSure lifetime system warranty.



### **Health & Safety**

Ensure that suitable personal protection is worn when handling Gyproc and Isover products/systems. All relevant Health and Safety Legislation and Guidelines must be followed. The relevant Material Safety Data Sheets must be referred to prior to specifying, handling or installing Gyproc & Isover products and systems.

### **Installation**

For full installation assistance refer to Gyproc Systems Solutions and Installation Guide literature which is available at [www.gyproc.ie](http://www.gyproc.ie). Alternatively contact the Technical Service department at 1800 744480 (RoI) or 0845 3990159 (NI). Full specification, detailing and site support can be offered for your project specific requirements.

**Manufacturer**

Gyproc, Unit 4 Kilcarbery Business Park, Nangor Road, Dublin 22, Ireland