

Metal Stud Partition system type – **GypWall Extreme**

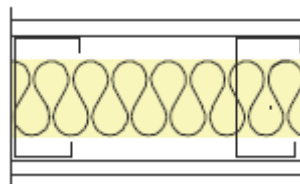
Product Substantiation Report (PSR) reference – **X606011**

Performance characteristics

Partition Fire Resistance (BS 476):	30 minutes
Partition Laboratory Sound Resistance (BS EN 717):	49 R_wdB
Partition Duty Rating (BS 5234):	Severe

Maximum Recommended Partition height:
(Based on limiting deflection of L/240@200Pa) **3800mm**

Partition nominal thickness (excluding finishes): **97mm**



Framing components

Gypframe metal stud reference: Stud centres:	Gypframe 70S60 ‘C’ Studs 600mm
Gypframe channel reference:	Gypframe 72DC60 Deep Floor & Ceiling Channel
Acoustical sealant:	Gyproc Sealant applied around perimeter to both sides of partition framework
Deflection Head requirement:	As per structural requirements (defined by others)
Drawing references:	Refer to relevant Architects drawings

Plasterboard components

Number of plasterboard layers each side:	1
Gyproc plasterboards:	
Layer 1 (Inner):	12.5mm Gyproc Rigidur
Layer 2	n/a
Layer 3	n/a
Screw fixings for boarding:	
Layer 1 (Inner):	40mm Gyproc Rigidur Screws
Layer 2	n/a
Layer 3	n/a

- All board joints installed staggered in accordance with Gyproc’s current installation recommendations.
- Vertical Joints in face layer boards treated in accordance with **Gyproc Paper Joint Tape** method.
- Horizontal joints in face layer boards to be backed by **Gypframe GFS1** Fixing Strap and treated in accordance with **Gyproc Paper Joint Tape** method.
- Gyproc DryWall screws installed at 300mm centres (200mm at external corners)

- Gyproc DryWall screws must maintain a minimum 10mm penetration through metal framing components.

Insulation components

Insulation specification required in stud cavity: **50mm Isover Acoustic Roll**

- Isover Acoustic Roll insulation fixed inside head of GypWall stud cavity with lengths of **Gypframe GA1 Angle** or timber battens.

Finishing

2mm **Gyproc Skimcoat** plaster (or **Carlite Finish**) applied in accordance with Gyproc's current recommendations.

Or

1 coat of **Gyproc Drywall Primer** prior to direct decoration (applied as soon as possible after board fixing is completed).

Qualifications

All materials unless otherwise indicated shall be supplied by Gyproc, and shall be installed in accordance with their current published instructions and generally in accordance with all relevant Standards. Systems installed in full accordance with Gyproc's recommendations comprising of genuine Gyproc and Isover branded components qualify for the SpecSure lifetime system warranty.



Health & Safety

Ensure that suitable personal protection is worn when handling Gyproc and Isover products/systems. All relevant Health and Safety Legislation and Guidelines must be followed. The relevant Material Safety Data Sheets must be referred to prior to specifying, handling or installing Gyproc & Isover products and systems.

Installation

For full installation assistance refer to Gyproc Systems Solutions and Installation Guide literature which is available at www.gyproc.ie. Alternatively contact the Technical Service department at 1800 744480 (RoI) or 0845 3990159 (NI). Full specification, detailing and site support can be offered for your project specific requirements.

Manufacturer

Gyproc, Unit 4 Kilcarbery Business Park, Nangor Road, Dublin 22, Ireland