

## Metal Stud Partition system type – **GypLyner Encase**

Product Substantiation Report (PSR) reference – **D150001 (FL4-90)**

### **Performance characteristics**

Fire Protection to structural steel (BS476) :

**90 minutes** (based on section factor limitations below)

Maximum boxed profile section factor  $A/V$  ( $H_p/A$ ) :

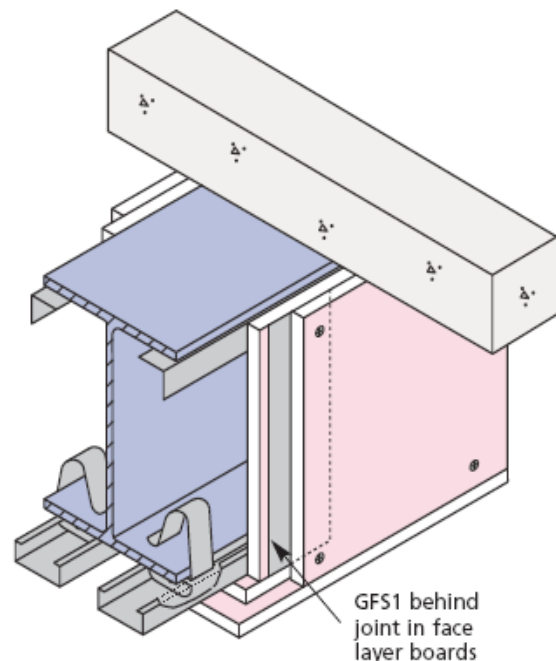
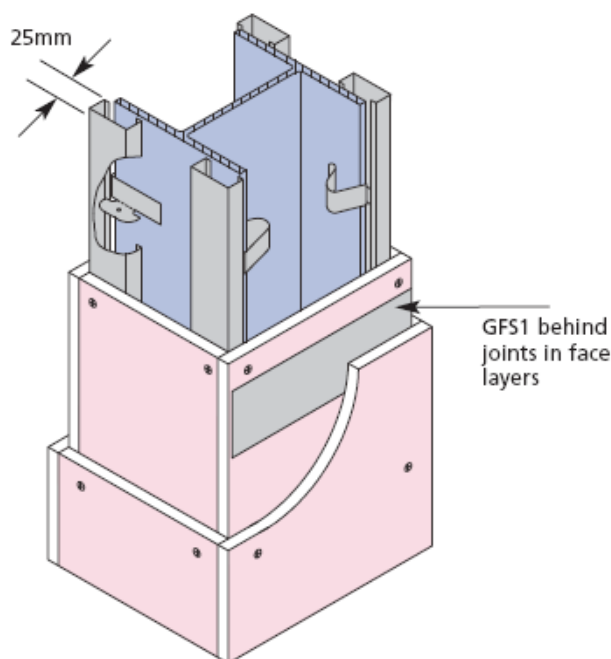
**260m<sup>-1</sup>**

Fire protection to steel rating above is based on the length of time that structural steel sections of stated limiting section factors  $A/V$  ( $H_p/A$ ) are restricted from exceeding 550°C under BS476: Part 21: 1987 test criteria. The GypLyner Encase system using the components stated below is suitable for three and four sided encasement of 'H' profile structural steel sections (columns and beams). For other profile styles contact the Technical Service department at 1800 744480 for further assistance.

Encasement offset distance from structural steel:

**25mm** (to face of framing)

**53mm** (to face of encasement)



### **Framing components**

Gypframe metal channel reference:

**Gypframe GL1 Lining Channel**

Connecting clips for channels:

**Gypframe GL3 Channel Connector**

(where additional attachment clips are not used)

Gypframe steel attachment clips:

**Gypframe GL10 Steel Framing Clips**

Gypframe steel attachment clip centres:

**800mm** (and at GL1 Channel ends where GL3 connecting clips not used)

Angle required for three sided encasement: **Gypframe GA2 Steel Angle**

Drawing references:

Refer to relevant Architects drawings

### **Plasterboard components**

Number of plasterboard layers around encasement: **2**

Gyproc plasterboards:	Layer 1 (Inner):	<b>15.0mm Gyproc FireLine</b>
	Layer 2	<b>12.5mm Gyproc FireLine</b>
	Layer 3	n/a

Screw fixings for boarding:	Layer 1 (Inner):	<b>25mm Gyproc Drywall Screws</b>
	Layer 2	<b>40mm Gyproc Drywall Screws</b>
	Layer 3	n/a

- All board joints installed staggered in accordance with Gyproc's current installation recommendations.
- All joints in face layer boards treated in accordance with **Gyproc Paper Joint Tape** method.
- Transverse joints in face layer boards to be backed by **Gypframe GFS1 Fixing Strap** and treated in accordance with **Gyproc Paper Joint Tape** method.
- Gyproc Drywall screws installed at 300mm centres (200mm at external corners)
- Gyproc Drywall screws must maintain a minimum 10mm penetration through metal framing components.
- **Gyproc Wafer Head Jack-Point Screws** used to fix Gypframe metal components together

### **Insulation components**

Insulation specification required in stud cavity: n/a

### **Finishing**

2mm **Gyproc Skimcoat** plaster (or **Carlite Finish**) applied in accordance with Gyproc's current recommendations.

Or

1 coat of **Gyproc Drywall Primer** prior to direct decoration (applied as soon as possible after board fixing is completed).

### **Qualifications**

All materials unless otherwise indicated shall be supplied by Gyproc, and shall be installed in accordance with their current published instructions and generally in accordance with all relevant Standards. Systems installed in full accordance with Gyproc's recommendations comprising of genuine Gyproc and Isover branded components qualify for the SpecSure lifetime system warranty.



### **Health & Safety**

Ensure that suitable personal protection is worn when handling Gyproc and Isover products/systems. All relevant Health and Safety Legislation and Guidelines must be followed. The

relevant Material Safety Data Sheets must be referred to prior to specifying, handling or installing Gyproc & Isover products and systems.

### **Installation**

For full installation assistance refer to Gyproc Systems Solutions and Installation Guide literature which is available at [www.gyproc.ie](http://www.gyproc.ie). Alternatively contact the Technical Service department at 1800 744480 (RoI) or 0845 3990159 (NI). Full specification, detailing and site support can be offered for your project specific requirements.

### **Manufacturer**

Gyproc, Unit 4 Kilcarbery Business Park, Nangor Road, Dublin 22, Ireland